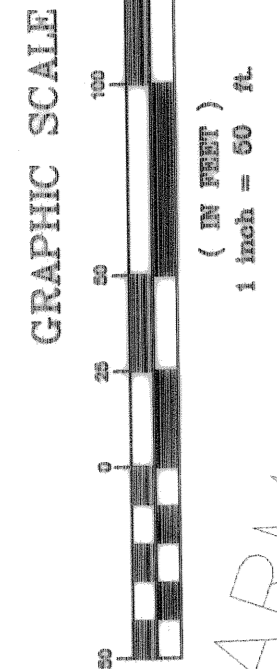
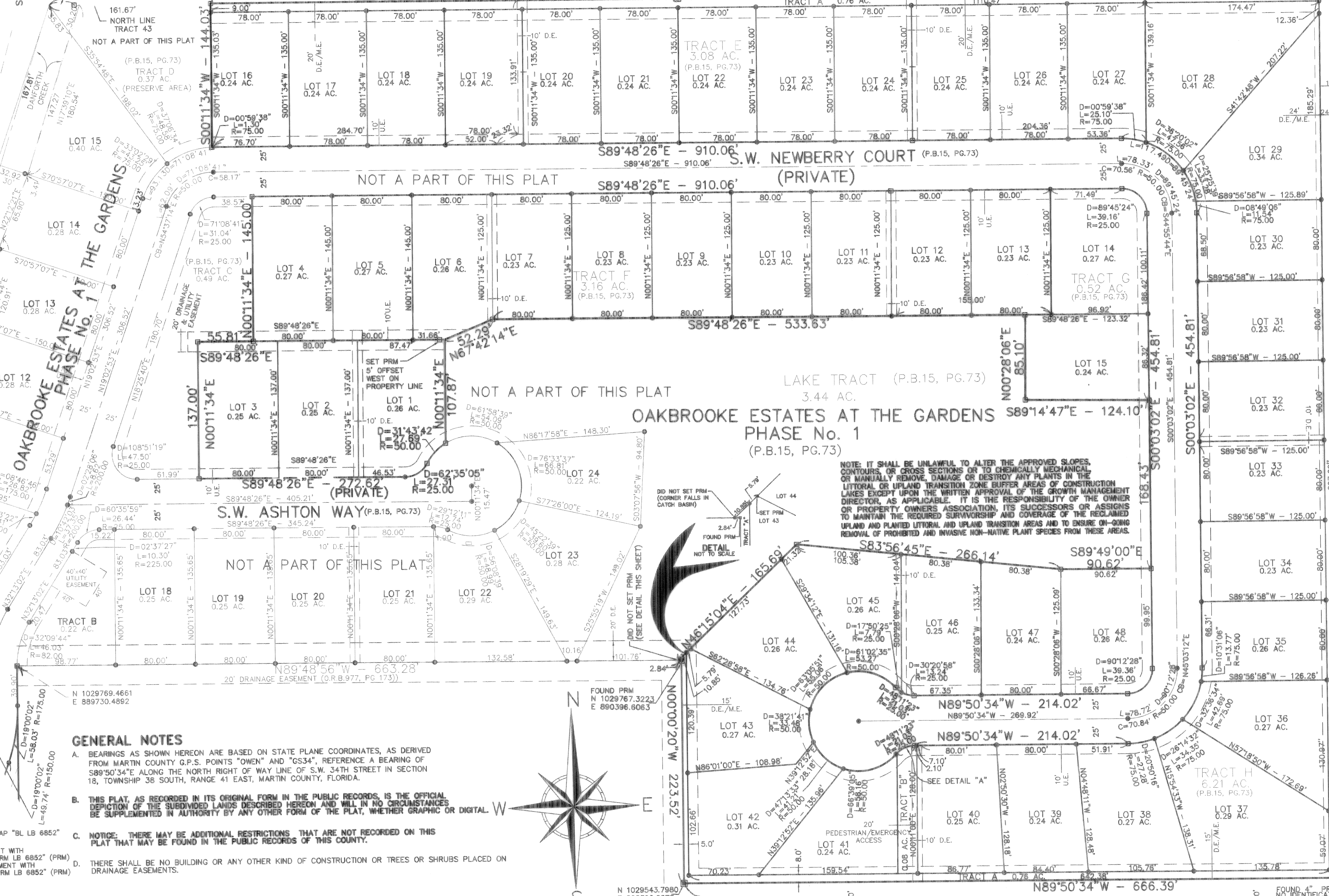


CLEVELAND 4TH EDITION

CLEVELAND 3RD EDITION

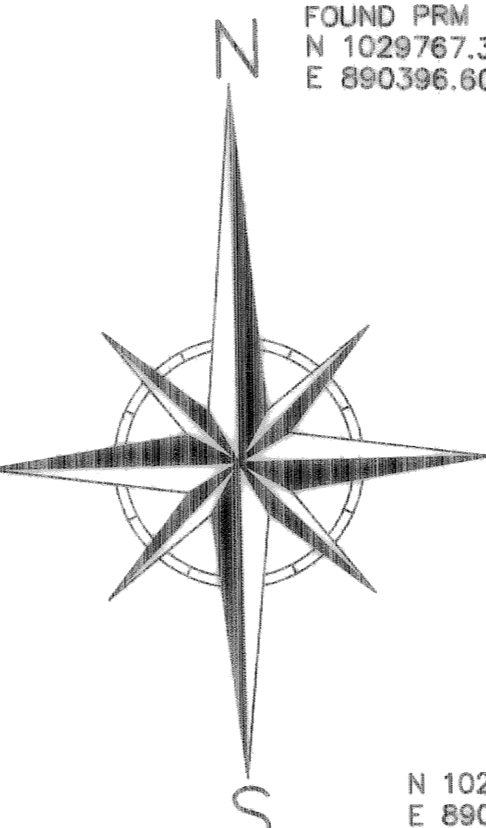


PALM CITY FARMS
PALM BEACH (NOW MARTIN) COUNTY, FLORIDA
DANFORTH CREEK
TRACT 42
LOT 8 0.28 AC.
LOT 9 0.29 AC.
LOT 10 0.31 AC.
LOT 11 0.28 AC.
LOT 12 0.28 AC.
LOT 13 0.28 AC.
LOT 14 0.28 AC.
LOT 15 0.40 AC.

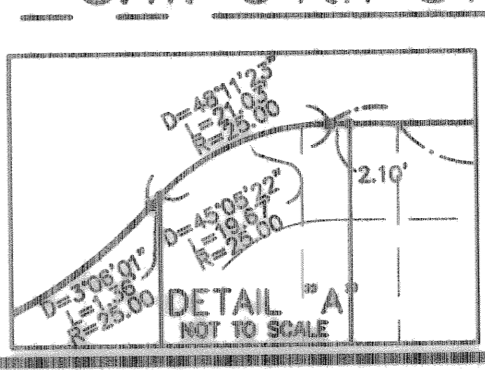


- GENERAL NOTES**
- A. BEARINGS AS SHOWN HEREON ARE BASED ON STATE PLANE COORDINATES, AS DERIVED FROM MARTIN COUNTY G.P.S. POINTS "OWEN" AND "GS34", REFERENCE A BEARING OF S89°50'34"E ALONG THE NORTH RIGHT OF WAY LINE OF S.W. 34TH STREET IN SECTION 18, TOWNSHIP 38 SOUTH, RANGE 41 EAST, MARTIN COUNTY, FLORIDA.
 - B. THIS PLAT, AS RECORDED IN ITS ORIGINAL FORM IN THE PUBLIC RECORDS, IS THE OFFICIAL DEPICTION OF THE SUBDIVIDED LANDS DESCRIBED HEREON AND WHEN IN NO CIRCUMSTANCES BE SUPPLEMENTED IN AUTHORITY BY ANY OTHER FORM OF THE PLAT, WHETHER GRAPHIC OR DIGITAL.
 - C. NOTICE: THERE MAY BE ADDITIONAL RESTRICTIONS THAT ARE NOT RECORDED ON THIS PLAT THAT MAY BE FOUND IN THE PUBLIC RECORDS OF THIS COUNTY.
 - D. THERE SHALL BE NO BUILDING OR ANY OTHER KIND OF CONSTRUCTION OR TREES OR SHRUBS PLACED ON DRAINAGE EASEMENTS.

- LEGEND**
- INDICATES SET NO. 5 IRON ROD AND CAP "BL LB 6852"
 - INDICATES NAIL AND DISK (POP)
 - INDICATES SET 4X4 CONCRETE MONUMENT WITH ALUMINUM DISC "BETSY LINDSAY, INC. PRM LB 6852" (PRM)
 - INDICATES FOUND 4X4 CONCRETE MONUMENT WITH ALUMINUM DISC "BETSY LINDSAY, INC. PRM LB 6852" (PRM)
 - M.E. INDICATES MAINTENANCE EASEMENT
 - D.E. INDICATES DRAINAGE EASEMENT
 - U.E. INDICATES UTILITY EASEMENT
 - D.B. INDICATES DEED BOOK
 - REF. INDICATES REFERENCE
 - D. INDICATES CENTRAL ANGLE
 - L. INDICATES ARC LENGTH
 - R. INDICATES RADIUS
 - AC. INDICATES ACRES
 - ORB. INDICATES OFFICIAL RECORD BOOK
 - P.B. INDICATES PLAT BOOK
 - PG. INDICATES PAGE
 - C. INDICATES CHORD LENGTH
 - CB. INDICATES CHORD BEARING



OAKBROOKE ESTATES AT THE GARDENS
PHASE No. 2 OF THE GARDENS P.U.D.
 BEING A REPLAT OF TRACTS "E", "F", "G" AND "H" OF "OAKBROOKE ESTATES AT THE GARDENS PHASE No. 1"
 PLAT BOOK 15, PAGE 73, MARTIN COUNTY, FLORIDA
 AND BEING A PORTION OF SECTION 18, TOWNSHIP 38 SOUTH, RANGE 41 EAST
 MARTIN COUNTY, FLORIDA.



B BETSY LINDSAY, INC.
 SURVEYING AND MAPPING
 208 NORTH U.S. HWY No. 2 - UNIT 8 - TEQUESTA, FLORIDA 33469
 (561)575-5275 (561)575-4324 FAX
 LICENSED BUSINESS NO. 6852
OAKBROOKE ESTATES, PHASE No.2 SHEET 2 OF 2